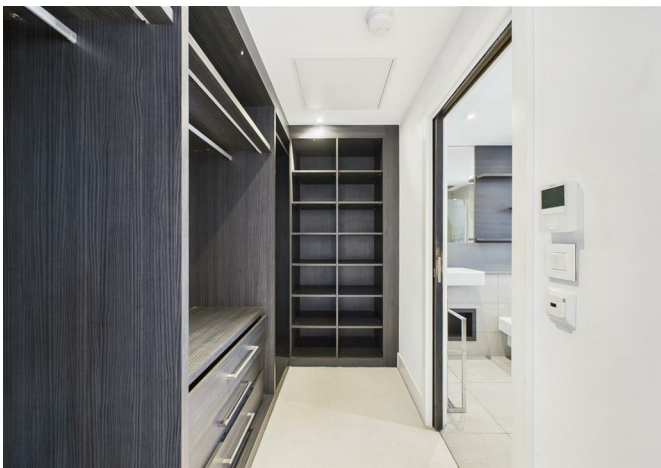


43211324 Hampstead Reach, Chandos Way, Hampstead, NW11 7HP
£3,000



43211324 Hampstead Reach, Chandos Way, Hampstead, NW11 7HP

£3,000

Nestled alongside abundant green spaces such as the Hampstead Heath Extension and Golders Hill Park, its location is truly desirable. Whether wandering by waterways or meandering through lush parks, one might easily mistake the surroundings for the countryside, all while relishing the vibrant offerings of London.

Barnet, among London's largest boroughs, proudly introduces the new Hampstead Reach development. Drawing inspiration from the architectural heritage of Hampstead Garden Suburb, this development is situated just a stone's throw away from the picturesque Hampstead Heath, tucked into a serene cul-de-sac accessed from Wellgarth Road. The photos closely resemble the apartment but are not of the exact unit, provided solely for illustrative purposes.

The interiors of the development pay homage to the Arts and Crafts period while incorporating contemporary elements, catering to modern living styles.

Immerse yourself in the rich culture and storied traditions of historic North London as you anticipate an exciting future in this remarkable locale.

Description

Situation

Furnished
Council Tax Band:
Available:



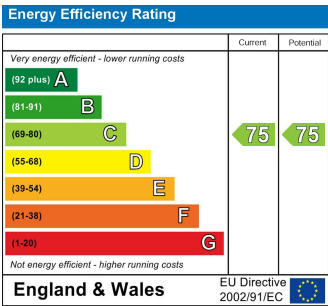
Floor Plans



Area Map



Energy Performance Graph



These particulars, whilst believed to be accurate are set out as a general outline only for guidance and do not constitute any part of an offer or contract. Intending purchasers should not rely on them as statements of representation of fact, but must satisfy themselves by inspection or otherwise as to their accuracy. No person in this firms employment has the authority to make or give any representation or warranty in respect of the property.